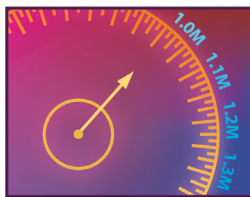




CLASSIC PRACTICE RESOURCES, INC.

INTRODUCING THE NEWEST AND MOST ACCURATE

Practice Management Tool For Real-Time Consulting



DENTAL *Dashboard*[™]

Track the VITAL Functions of your Dental Practice Daily!

At last, we took the guesswork out of practice management! Doctors no longer have to micro-manage and rely on sporadic reports collected from staff members... Now the Dental Dashboard[™] offers the **newest** and **most accurate** real-time consulting method to manage your practice and staff on a daily basis through **online virtual diary entries**.

Staff members enter assigned statistics, while OUR consultants monitor the numbers. Generate real-time reports, offering you a result unparalleled by any other program. You will now be able to pinpoint exactly where the trouble areas in your practice are, and finally fix them once and for all!

MONTHLY SERVICE NOW AVAILABLE!

Dental Dashboard will:

- Provide gauges for the doctor and staff so they can see how they are doing.
- Allow the doctor to focus on dentistry, while always knowing "the pulse of the practice."
- Make sure that staff are doing their jobs and are accountable for their actions.
- Cut down on staff-resisted micro-managing.
- Give you access to your vital information via internet from anywhere at anytime.
- Be viewed frequently by our in-house consultants while suggestions are made to the office on how to improve the office systems and get better results from the work already being done.
- Improve income and production just by you paying closer attention to it!

Learn more about the Dental Dashboard today!
Call 1 (800) 928-9289 or visit www.classicpractice.com!